



Room of the Day | Bathroom Makeovers

Room of the Day: Origami Inspires a Master Bathroom Design

A once-frigid bathroom is now a calm and welcoming oasis



Becky Harris September 5, 2016

Houzz Contributor. Hi there! I live in a 1920s cottage in Atlanta that I'll describe...

[More >](#)

Located in an attic space over a garage, this improperly insulated master bath was downright frigid in the wintertime. After initially trying to tackle the project themselves, the couple who live here looked to Houzz to find an architect for help. John T. Conroy and his team not only warmed up the temperature, but they also warmed up the space visually. Materials like gold and cream onyx, rice-paper-like quartz and a rosewood stain lend a relaxed style, with the Asian art of origami inspiring the meticulous attention to detail.



Princeton Design Collaborative

Photos by Jeffery E. Tyron

Room at a Glance

Who lives here: A busy professional couple

Location: Freehold, New Jersey

Size: 83 square feet (7.7 square meters)

Designer: Princeton Design Collaborative

"This client called me up one day and said, 'My wife says I'm supposed to call you,' " architect John T. Conroy says. "She had found me on Houzz."

The couple showed Conroy the aesthetic they were interested in by sharing a master bathroom Houzz

ideabook they'd put together. Between that and one meeting with them, he was able to create three 3-D modeling schemes with varying budgets. The couple were excited by all three and chose the option in the middle of the budget range, which left most of the fixtures in the same place (saving on plumbing costs) but bumped the room out about 18 inches to accommodate a larger shower with a continuous bench.



Before Photo

Princeton Design Collaborative

Because the room was over the garage in an attic space, the walls and ceiling were poorly insulated and the room was frigid during the winter. The architects used closed-cell insulation on the walls, ceiling and floor (because an unheated garage sits below) to keep the cold air out.

The original dimensions of



the room were about 12 by 5.5 feet, and with the extension they're now 13.5 by 5.5.



The next step in the process was choosing a materials palette. The firm's interior design team presented three options based on the couple's taste. The couple chose the Asian-inspired palette of onyx backsplash tile, a linen-like patterned porcelain floor tile, rosewood-stained cherry cabinetry, chrome hardware and quartz countertops with a rice-paper-like pattern.

Their homeowners association rejected their proposal to add a window, so the designer ensured that the room would have enough light with LED lighting.

"Because the lighting is placed over the mirrors, it essentially doubles the light they give off," Conroy says. The existing skylight lets in natural light.

Cabinets: Tucker Distinctive Kitchens

Princeton Design Collaborative

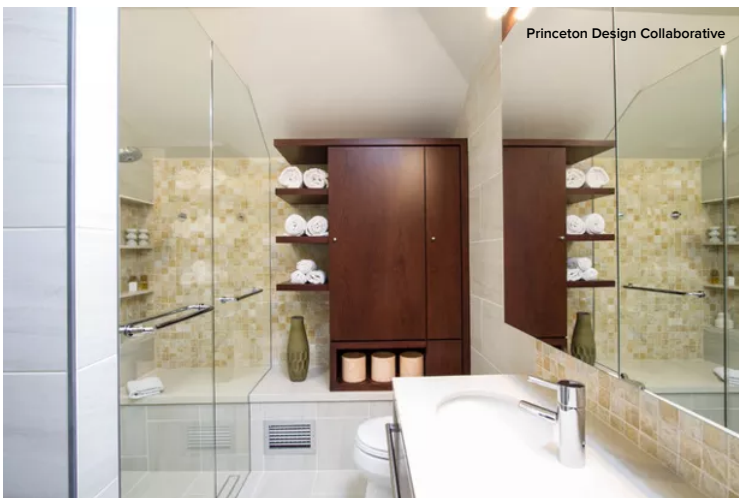


The folded paper planes of origami were part of the inspiration. The quartz countertop “folds” to wrap the vanity and continues along the tub deck.

The grout lines add another layer of folded planes, and the firm meticulously drew the layout of each in its plan. “Every grout line had purpose, and the installation by the contractor was impeccable,” Conroy says.



The team also incorporated the folded-planes motif into the wood pieces. The cabinet in the right corner transitions to shelves, while a long line overhead continues above the vanity lighting.



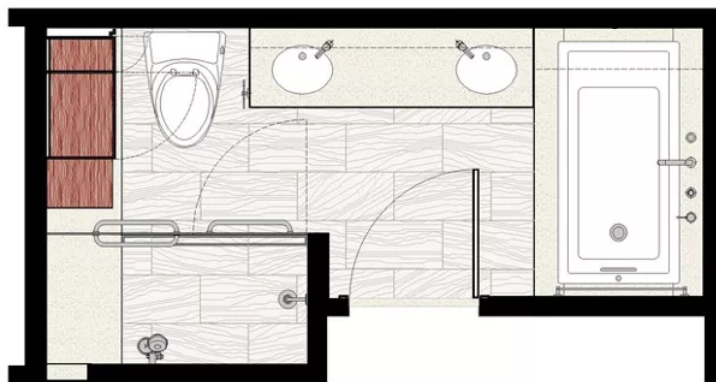
The continuous bench extends from the inside of the frameless glass shower stall to the opposite side of the room. It also conceals ductwork. Here you can see an example of the attention to detail: The vent on the bench was placed perfectly within grout lines.

Another detail worth noting are the recesses in the wood. "I'm an innie, not an outie," Conroy says. "Instead of adding applied moldings, I like to carve out reveals." This creates a clean, modern look.



The onyx tile extends all the way behind the continuous bench, then wraps the corner into the niche.

The clients are environmentally conscious, so that factored into their choices. The new insulation, LED lighting, non-VOC paint, low-flow fixtures and sustainable materials were all environmentally friendly choices.



Here you can see how all of the elements fit into the relatively tight space while providing an easy flow. The 18 inches gained via the bump-out is along the left side of the drawing.

Builder: M. Kaiser Building & Remodeling

Browse more Rooms of the Day